

# Custom archwires appointment

## Great news!

## Your suresmile custom archwires are here.

Your suresmile archwires are customized for your unique treatment plan by applying robotic technology to wires made from Shape Memory Alloy. Because these highly accurate wires are custom-designed for you, your teeth move more precisely into place and fewer wire changes and appointments are needed. The precision of suresmile wires can reduce your treatment time by 33% on average.

### What do wires have to do with braces?

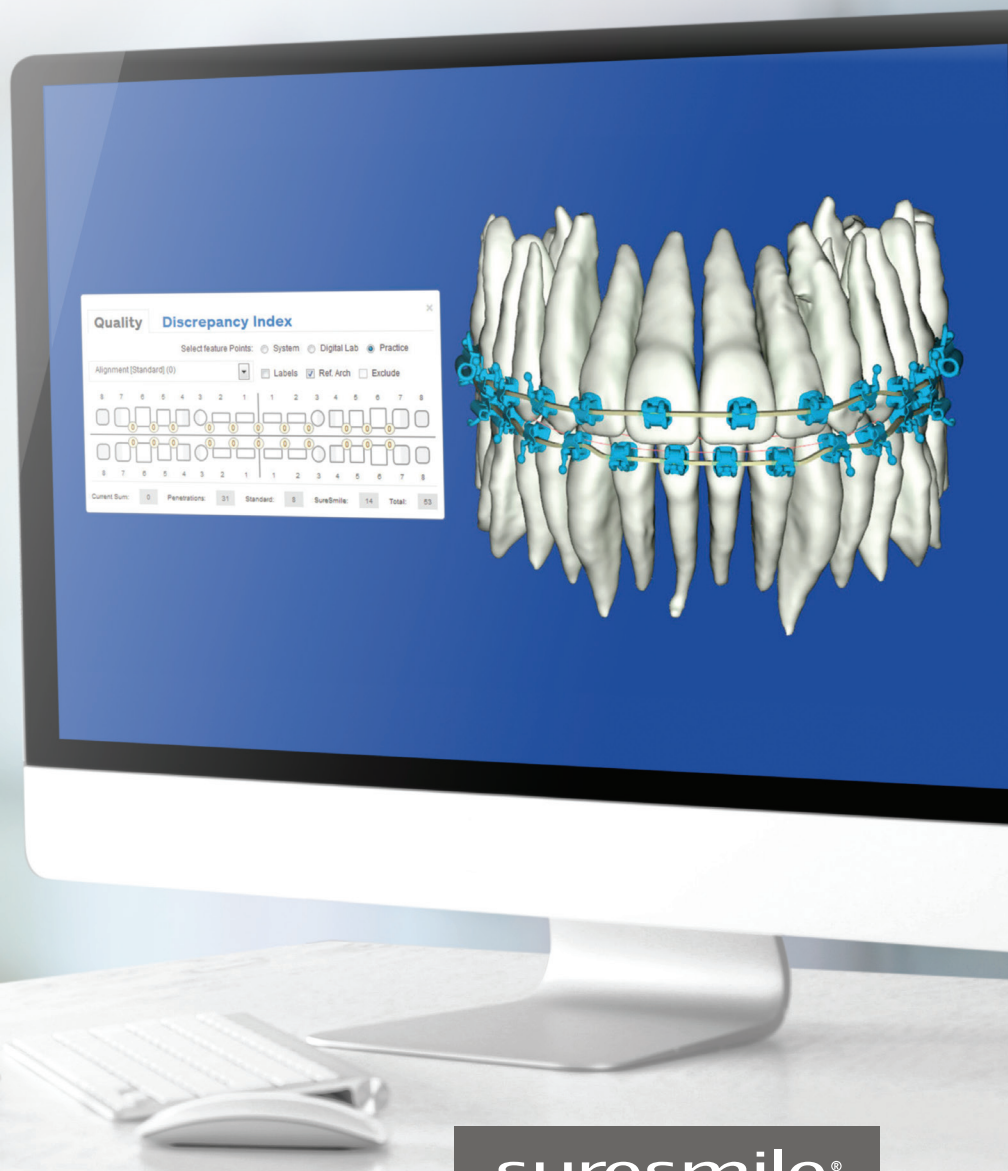
Orthodontists move teeth by attaching a bracket to each tooth to serve as a handle for the wire. When the wire is tied to the brackets, it delivers a force to move the teeth.

### How are suresmile wires different from regular orthodontic wires?

Regular orthodontic wires are curved in a generic shape. At the beginning of treatment, these wires are useful for getting your teeth moving in the right direction.

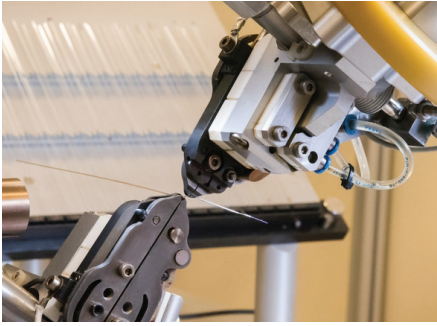
Since your teeth are unique, you will eventually need wires that can achieve specific movements. With traditional orthodontics, the doctor inserts a stiffer wire and uses special pliers to make wire bends that the doctor estimates will achieve the desired results. Since these changes can affect neighboring teeth and your bite, the doctor makes these adjustments over several appointments to observe the effects of each change and make corrections if needed.

In contrast, suresmile uses a 3D plan of your target tooth positions and a robot to produce the wires more accurately than is humanly possible and includes all of the bends in one set of wires.

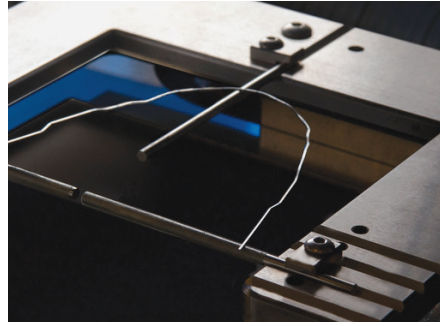


suresmile®

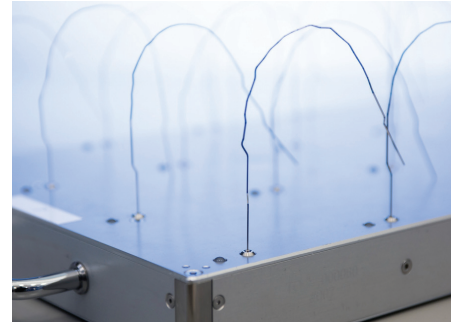
to be sure.



Robotic customization



Individually inspected to ensure accuracy



Shape memory alloy archwires

### How were my wires made?

The process of producing your wires started at your scan appointment where we captured positions of your teeth and the location of your brackets. The doctor used the resulting 3-D model to plan the final outcome of your treatment.

Your wires are fabricated by computing the wire design needed to achieve treatment goals, and then sending the prescription to a robot. All of the bends your orthodontist requires are placed into the wires by the robot. Normally, this process would require adjustments over weeks or months when done by hand.

### Should I be more careful with these wires?

Brackets hold the suresmile wires in place. Please closely follow the instructions you received at the beginning of treatment to avoid accidentally damaging or knocking off your brackets. If you lose brackets after receiving your wires, you may need to return for another scan followed by a new set of wires. Not only is that inconvenient for you, but it lengthens your treatment.

### Are suresmile wires more comfortable?

Many patients have found that suresmile wires are more comfortable for two reasons. First, the discomfort of being in braces is largely caused by wire changes. Since suresmile wires are custom-designed, there is no need to constantly change out wires to advance treatment.

Second, the suresmile process uses a wire material called Nickel Titanium. It has gained popularity for being flexible yet very effective in delivering minimal, consistent forces to move teeth. It is also heat-activated, which means it responds to body heat.

While Nickel Titanium has many advantages for orthodontic treatment, it is almost impossible to bend reliably by hand. Due to this limitation, historically, Nickel Titanium could not be used once a patient progressed past the initial stages of treatment. With suresmile, a robot heats the wire to high temperatures making it malleable enough to make the custom bends. Now this more comfortable wire material can be used at any point in treatment.

### How do suresmile wires shorten treatment time?

suresmile wires do not move teeth any faster than the wires used in conventional orthodontics. Your overall treatment time is shorter because suresmile moves your teeth directly towards their target positions.