

Scanning appointment

Congratulations! You have reached a milestone in your suresmile treatment.

The CBCT scan is used to build a 3-D model of your teeth and roots on the computer. The doctor will analyze the model to diagnose treatment issues and design your custom archwires.

How does scanning work?

The scan procedure is the beginning of your suresmile treatment. We use Cone Beam Computed Tomography (CBCT) to scan your teeth. This advanced imaging technology allows us to better analyze the orientation and position of your teeth and roots by capturing different tissue types such as bone, teeth, nerves and soft tissue.

How long will this appointment take?

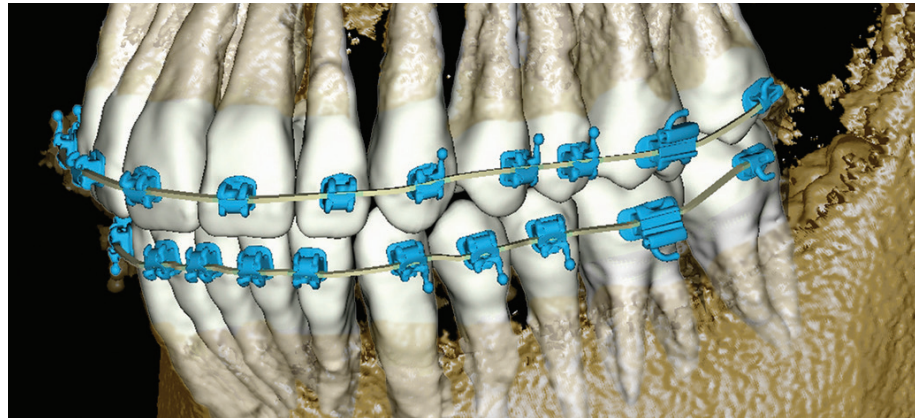
The scanning appointment is approximately 1 hour. In addition to your scan, we will need extra time to take current records including photos and x-rays to record your treatment progress.

What is special about CBCT?

CBCT gives us detailed information about your teeth. We can see the entire tooth including the root to better plan your treatment. With suresmile and CBCT imaging technology, you are receiving the most advanced orthodontic treatment available today.

What is the CBCT scan like?

The CBCT process takes less than a minute to complete. There are actually two scans—a preview scan that takes 2-3 seconds to check your position and then the actual scan, which takes about 30 seconds. Because it is so accurate, any movement can distort the image. It is very important not to move during the scan. The chair



or camera and chin cup will be adjusted for your height to help you keep from moving. We will give you more instructions at the time of the scan.

What happens next?

After taking your scan, we will send it to the suresmile Digital Lab where individual tooth models will be made. Then the doctor will examine the 3-D model and determine the design needed for your suresmile custom archwires, which we will insert at your next appointment.

What is special about custom archwires?

In traditional treatment, a patient receives standard wires that the doctor must bend by hand over multiple appointments to get the teeth perfectly aligned.

With suresmile, the orthodontist moves models of your teeth on the computer into the best outcome for your teeth and bite. A set of wires is ordered to be bent robotically to achieve this result. Since the wires are custom-made for you, treatment is more efficient.

Is there anything I should do while waiting for my wire insertion appointment?

Because the brackets and wires work together to move your teeth, please closely follow the instructions you received at the beginning of treatment to avoid accidentally damaging or knocking off your brackets. If you lose brackets after your scan, you may need to come back in for another scanning appointment. Not only is that inconvenient for you, but it delays your treatment.